

## CLINICAL CAMEO

# Metallosis of the skin mimicking malignant skin tumour

M. AKIMOTO, H. HARA AND H. SUZUKI

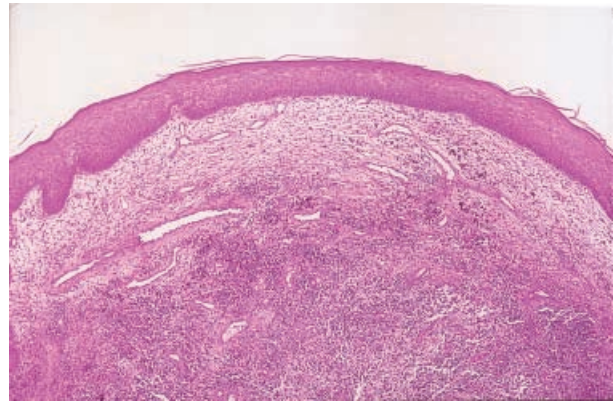
Department of Dermatology, Nihon University School of Medicine, 30-1 Oyaguchi-kamimachi, Itabashi-ku, Tokyo 173-0032, Japan.

Accepted for publication 1 January 2003

An 80-year-old woman presented with a 2-year history of multiple nodular lesions on her lower right leg. Examination revealed solid red-brownish nodules and papules with a marked nonpitting lymphoedema on the lower right leg. Several blue-blackish macules were scattered around the nodules and papules (Fig. 1). She had had a total lateral replacement of the right hip 6 years previously. X-ray revealed that two titanium screws were broken and that the outer cup had migrated proximally. Histology showed diffuse granulomatous inflammation, large lymphatic spaces and fine brown-black granules within the histiocytes (Fig. 2). We concluded that the metal debris might have originated from the titanium acetabular cup and screws.



**Figure 1.** Solid red-brownish nodules and papules with a marked nonpitting lymphoedema are evident on the lower right leg. Several blue-blackish macules are scattered around the nodules and papules.



**Figure 2.** Photomicrograph showing diffuse granulomatous inflammation, large lymphatic spaces and fine brown-black granules within the histiocytes (haematoxylin and eosin).

Correspondence: Mari Akimoto.  
E-mail: marimo@med.nihon-u.ac.jp